

Operating instructions interface for CTS-32-C

WIN-XP, VISTA, WIN7, WIN8, WIN10

1 Installation of the PC software

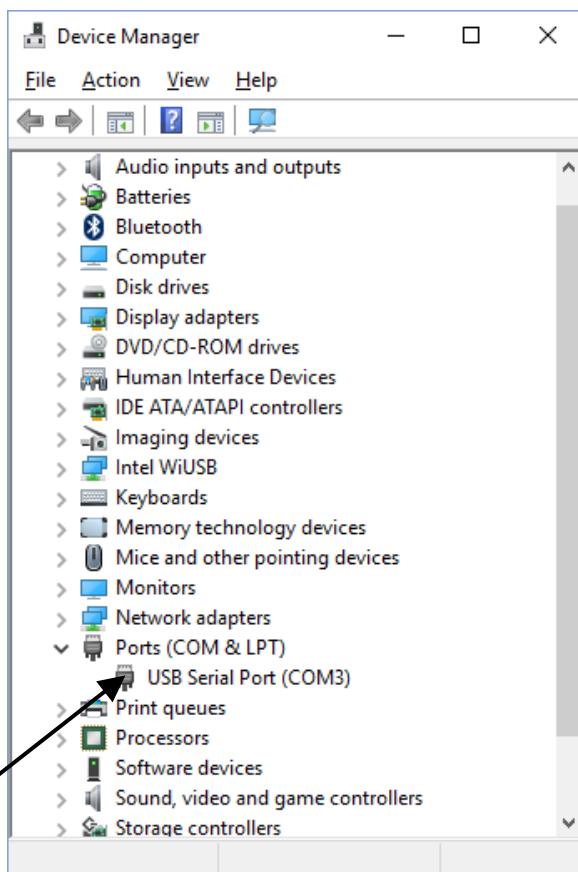
Download the PC-Software (CTS_32_C-Interface.exe) and the FTDI-Driver, suitable to your operating system, from the Internet via the link:

http://www.tuning-set.de/html/download_e.html

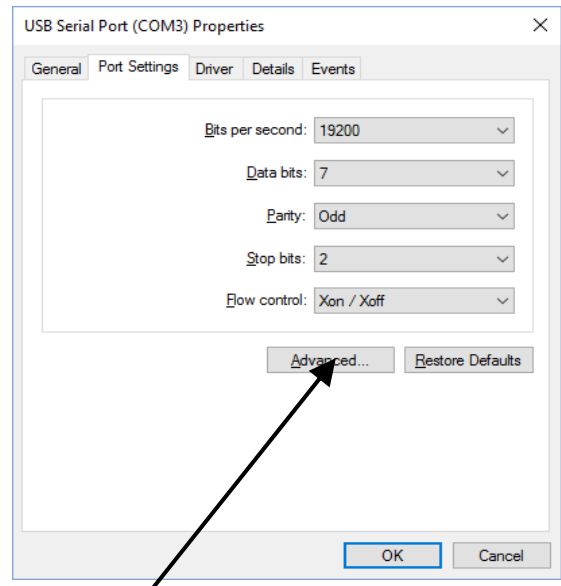
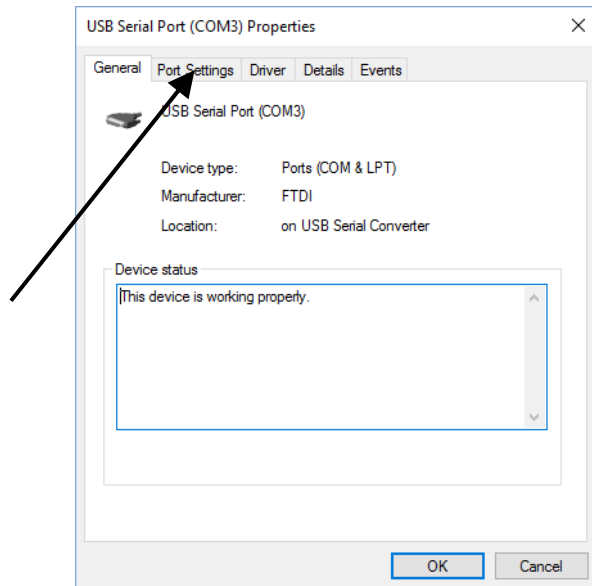
Install the FTDI-Driver. During this installation don't connect the Tuning Set to the PC. "CTS_32_C-Interface.exe" is an already executable file which runs on every directory.

2 Adjustment of the virtual COM-Port number

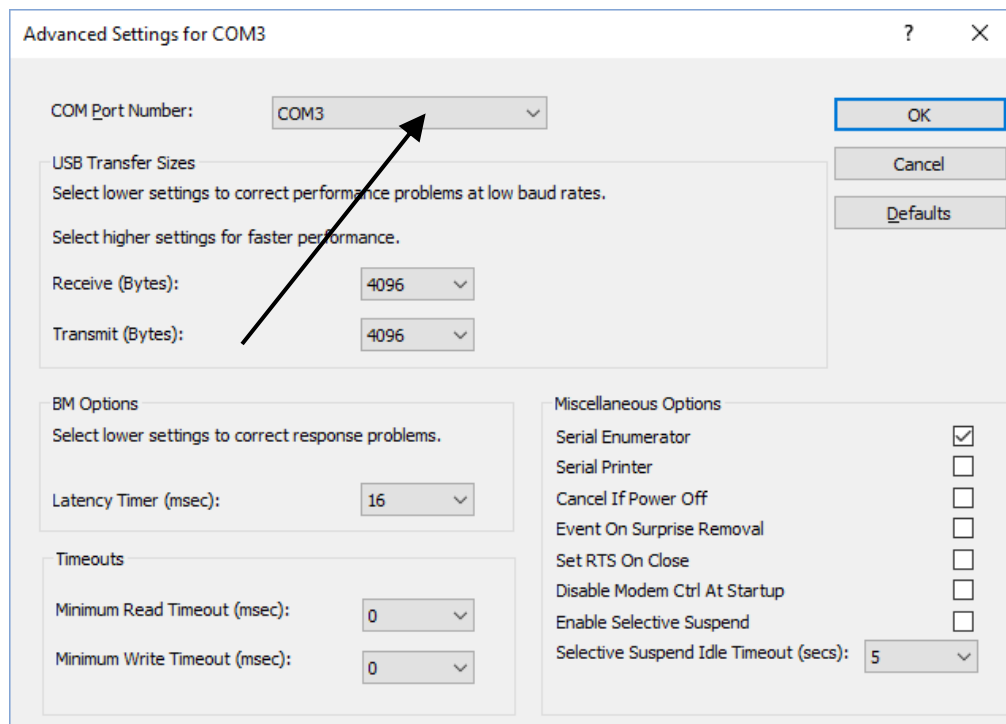
First, the correct COM-Port number must be set in the Device Manager. Important! The Tuning Set must first be connected to a USB-Port of the PC with the supplied cable. How to call the Device Manager you will find using the documentation of your operating system. Here you will find the COM-Port Number that was assigned. In this example COM3.



Now double click the line "USB Serial Port..."



Click Port-Settings. Click Advanced.

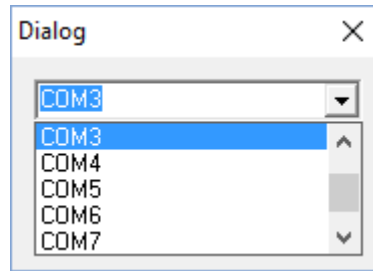
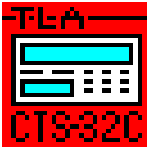


Select a free port number between COM3 and COM8. Remember this number for the adjustment of the Interface-Program.

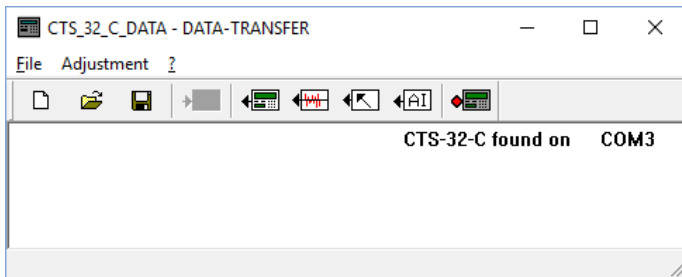
3 Starting the program

By using the delivered interface cable, connect the Tuning Set to an USB-Port of your PC and switch on the power.

Start the executable File CTS_32_C-Interface.exe.



The following window then appears:



With "Adjustment" you select the COM-Port number you have pinned after the installation of the FTDI driver. In this example COM 3.

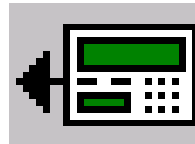
A few seconds after the Tuning Set has synchronized is displayed:

"CT-32-C found on COM<Portnumber> "

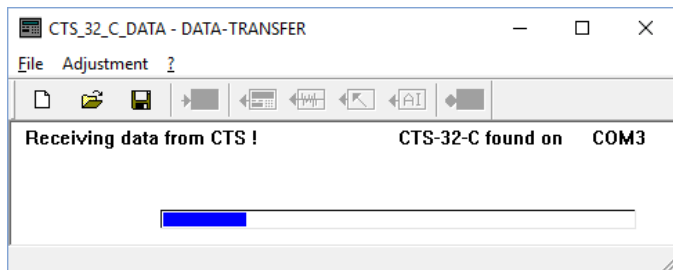
4 Data transfer from tuning set to PC.

4.1 Transmission of all tuning set data

Start the executable File CTS_32_C-Interface.exe.



This window will appear:

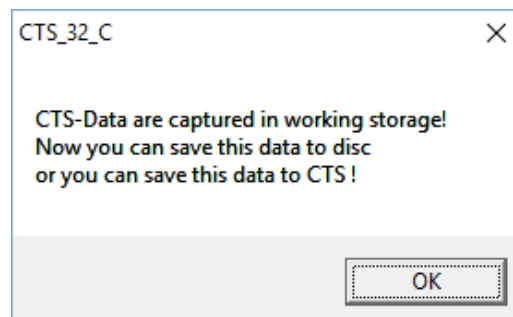


On the tuning set is displayed, which memory currently is being transferred.

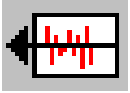
After successful data transmission, you'll see the following indication:

The data of the tuning set are now captured in the working storage of the PC.

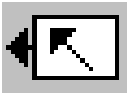
These data, you can save to mass storage, as usual in other windows applications.



4.2 Other buttons for data transfer from tuning set to PC



Only the historical temperaments will be transferred.



Only the data for the device settings will be transferred.

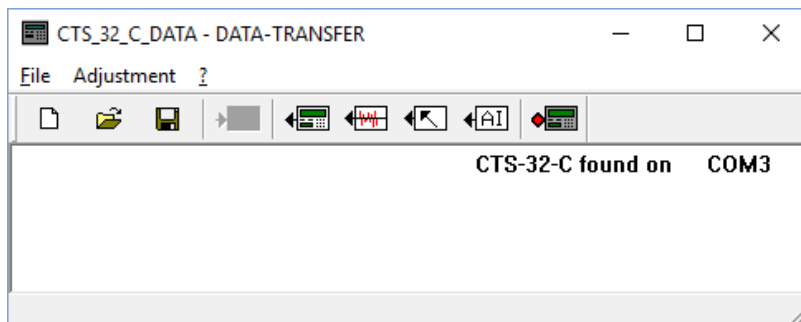


Only the data of the active instrument program will be transferred.

The sequence of data transfer is the same as already described in chapter 4.1.

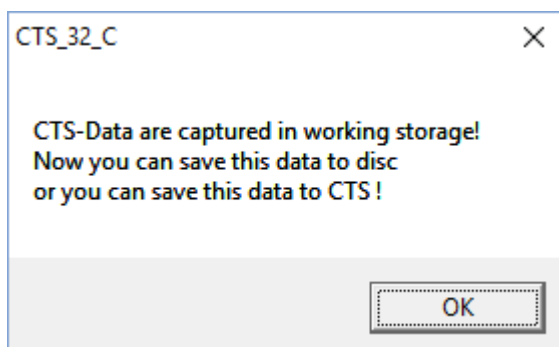
5 Data transfer from PC to tuning set

Start the executable File CTS_32_C-Interface.exe.



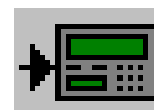
Open with "File → Open" an already existing CTS-32-C data file. For example: CTS_32_C_DATA.TXT.

Following window will appear. Click "OK".



The data are now captured in the PC's working storage.

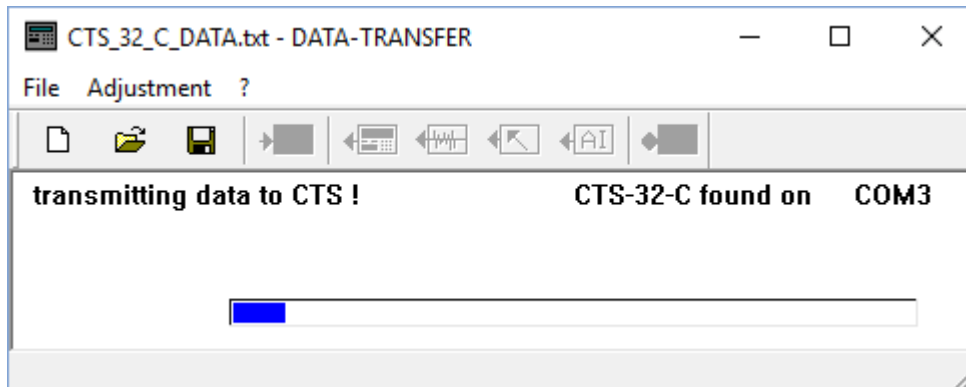
Clicking this icon starts the data transfer from PC to tuning set.



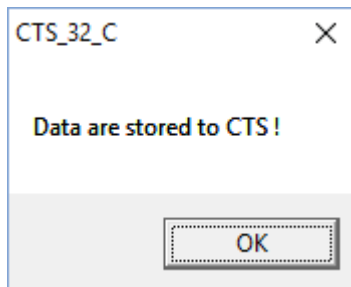
Attention !!! The memory of the tuning set will be overwritten.

If the data contains only a subset of the complete data, the rest of the data will be preserved in the tuning set.

The process of data transfer is indicated on the tuning set.



After successful data transmission, you'll see the following indication:



6 How to edit CTS-32-C data

The Tuning Set CTS-32-C - files are pure text files. You can change it with every editor ("notepad.exe" for example).

Editing the file, you have to ensure, that it's structure will be maintained. The lengths of the lines must necessarily remain the same. It's only allowed to overwrite numerical values (cent values for example).

After editing, you have to save your file as a pure text file; without any formatting data.

After that, you may your file store back into the tuning set (See chapter 5).