

Instruction Manual PC Software for TUNING SET CTS-7-C

WIN-XP, WIN-7, VISTA, WIN-8, WIN10

1 Installation of the PC software

Download the PC-Software (CTS-7-Interface.exe) and the FTDI-Driver, suitable to your operating system, from the Internet via the link:

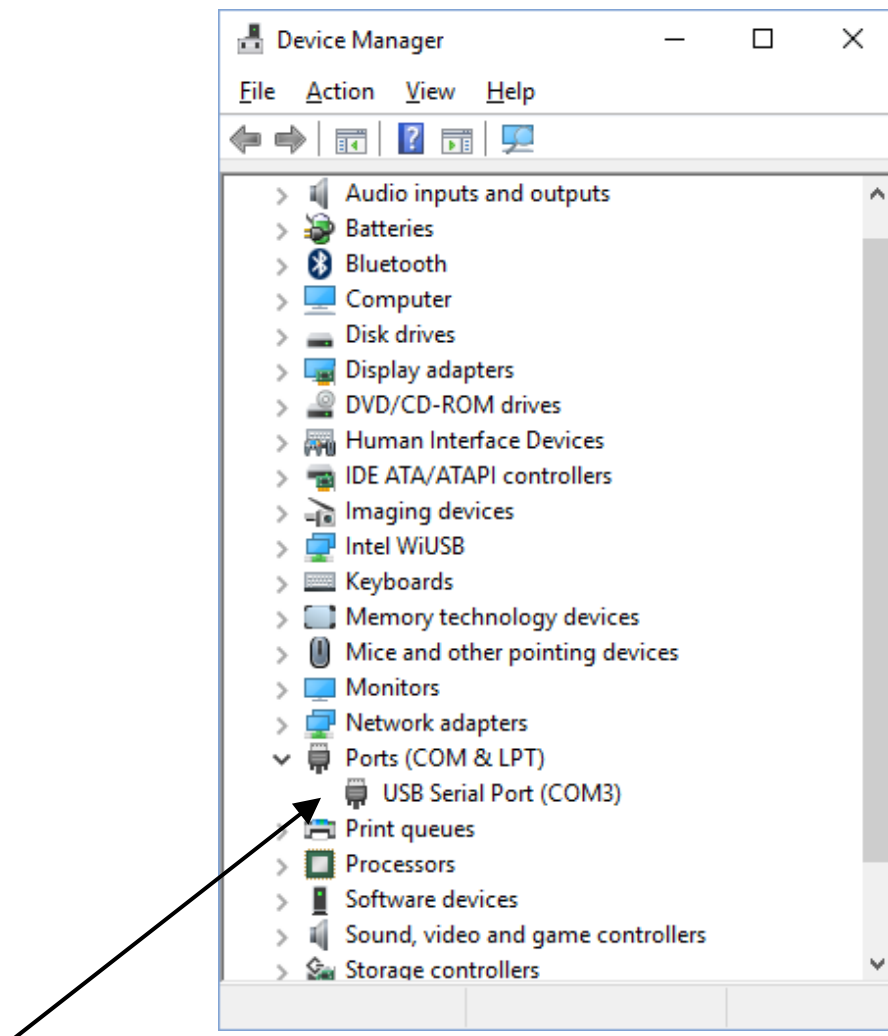
http://www.tuning-set.de/html/download_e.html

Install the FTDI-Driver. During this installation don't connect the Tuning Set to the PC. "CTS-7-Interface".exe is an already executable file which runs on every directory.

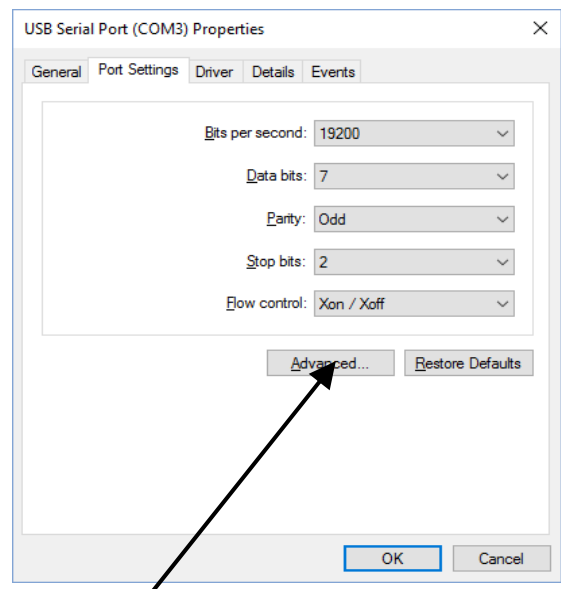
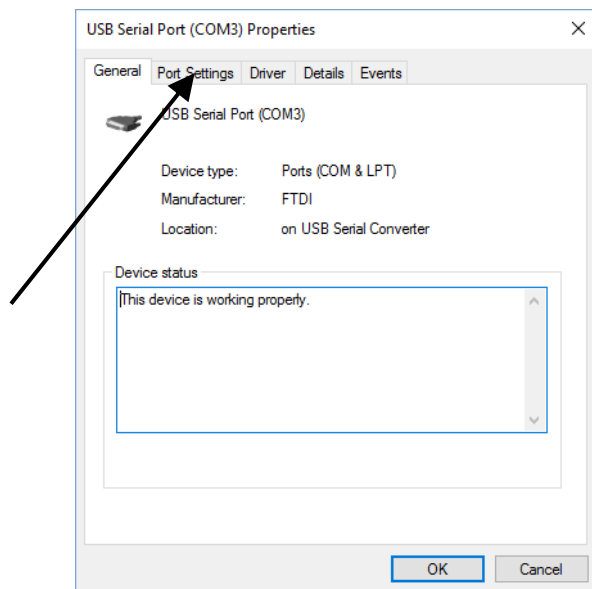
2 Adjustment of the virtual COM-Port number

First, the correct COM-Port number must be set in the Device Manager. Important! The Tuning Set must first be connected to a USB-Port of the PC with the supplied cable. How to call the Device Manager you will find using the documentation of your operating system.

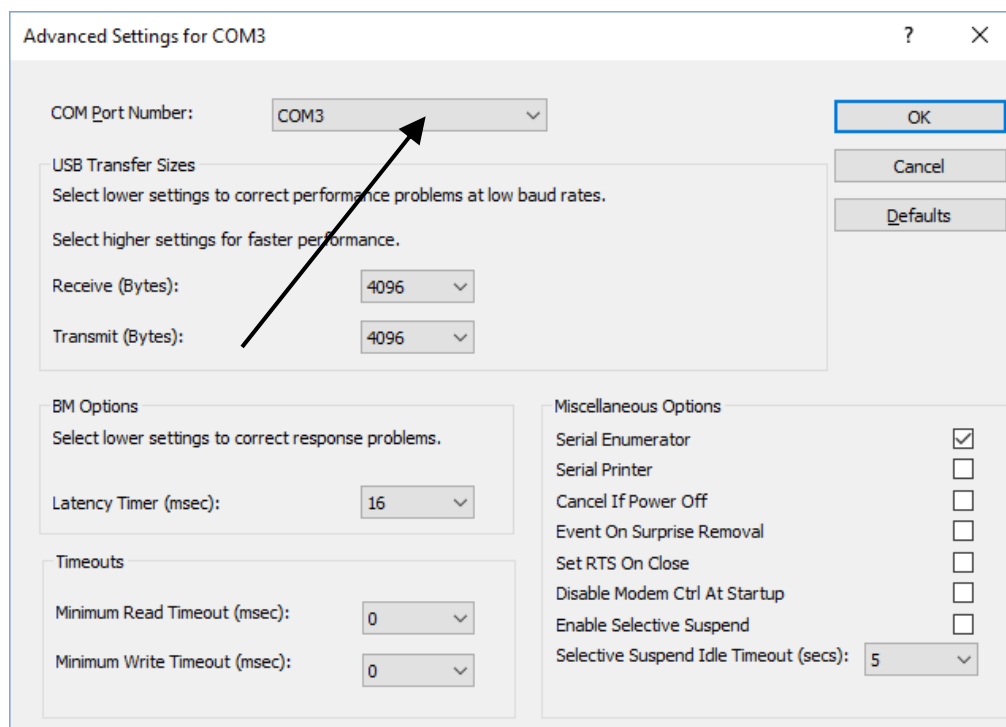
Here you will find the COM-Port Number that was assigned. In this example COM3.



Now double click the line "USB Serial Port..."



Click Port-Settings. Click Advanced.

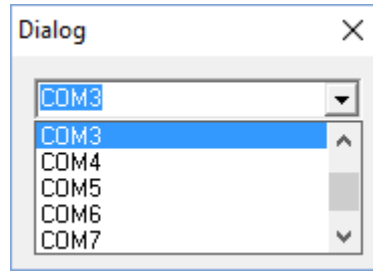
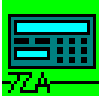


Select a free port number between COM3 and COM8. Remember this number for the adjustment of the Interface-Program.

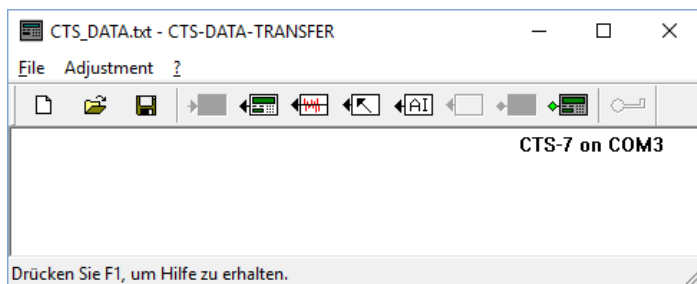
3 Starting the program

By using the delivered interface cable, connect the Tuning Set to an USB-Port of your PC and switch on the power.

Start the executable File CTS-7-Interface.exe.



The following window then appears:



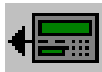
With “Adjustment” you select the COM-Port number you have pinned after the installation of the FTDI driver. In this example COM 3.

A few seconds after the Tuning Set has synchronized is displayed:

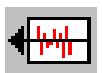
"CTS 7 on COM<Portnumber> "

4 Saving data of the Tuning-Set on your PC

To start the reception process, click one of the following ICON:



Transmit all data from the Tuning Set to the PC.



Transmit data of historical temperaments from Tuning Set to PC.

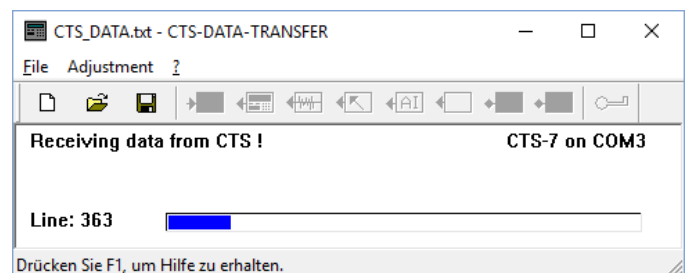


Transmit adjustment data from Tuning Set to PC.

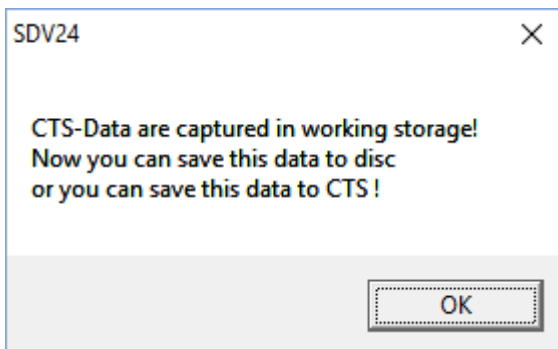


Transmit actual instrument program from Tuning Set to PC.

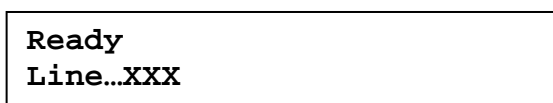
While the data is being transferred, the file content is shown continuously on the display of the Tuning Set. and in the window of the interface program. A bar display will appear on the PC.



Once the data transfer is completed, the following indicator appears on the screen of your PC:



Display of the Tuning Set:



The data sent from the Tuning Set are now in the working storage and can be stored in the mass storage in the way as usual in Windows applications.

The data is saved as text file which can be handled with the usual text processing programs (Word, Notepad etc.)

Should you wish to edit the data, it is important that you only overwrite the individual characters and do not change the length of the character strings.

The data must then be saved as unformatted text file by the corresponding text processing program.

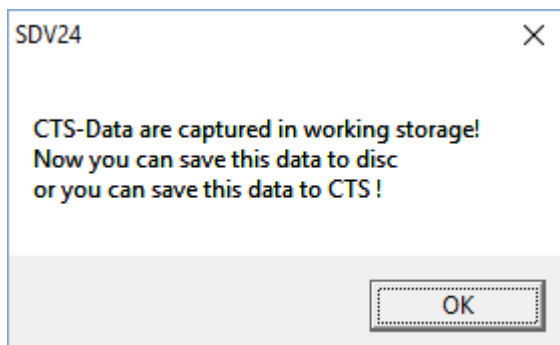
The data processed in this manner can then be transferred back to the Tuning Set.

5 Sending data from the PC to the Tuning Set

Start the data transfer program as described in chapter 2.

By clicking "File -> Open", open a file meant for CTS-7 as for example CTS7.TXT.

The following indicator then appears. Next confirm with OK.



The data are now buffered in the working storage of your PC and at this point, by clicking on the following icon,



can be transferred to the Tuning Set.

Attention !!! During this process the data formerly saved in the Tuning Set is overwritten.

Should the new data contain only parts of the entire data file, for example only one tuning program, the other existing data are preserved.



The data flow from the PC to the Tuning Set is now continuously displayed in the window. Once the data transfer is completed, the following indicator appears:

